

SWIMMING POOL COMPLEX GRÜNAUER WELLE

LEIPZIG, GERMANY, 1996-1999

Client
Sport- und Bäderamt Stadt Leipzig

Architect
Behnisch, Behnisch & Partner

Competition
1996, 1st prize

Planning and construction
1996-1999

Gross
5.160 m² / 55,520 sq.ft.

Volume
23.000 m³ / 812,130 cu.ft.

Address
Prager Straße 20-28
04103 Leipzig
Germany

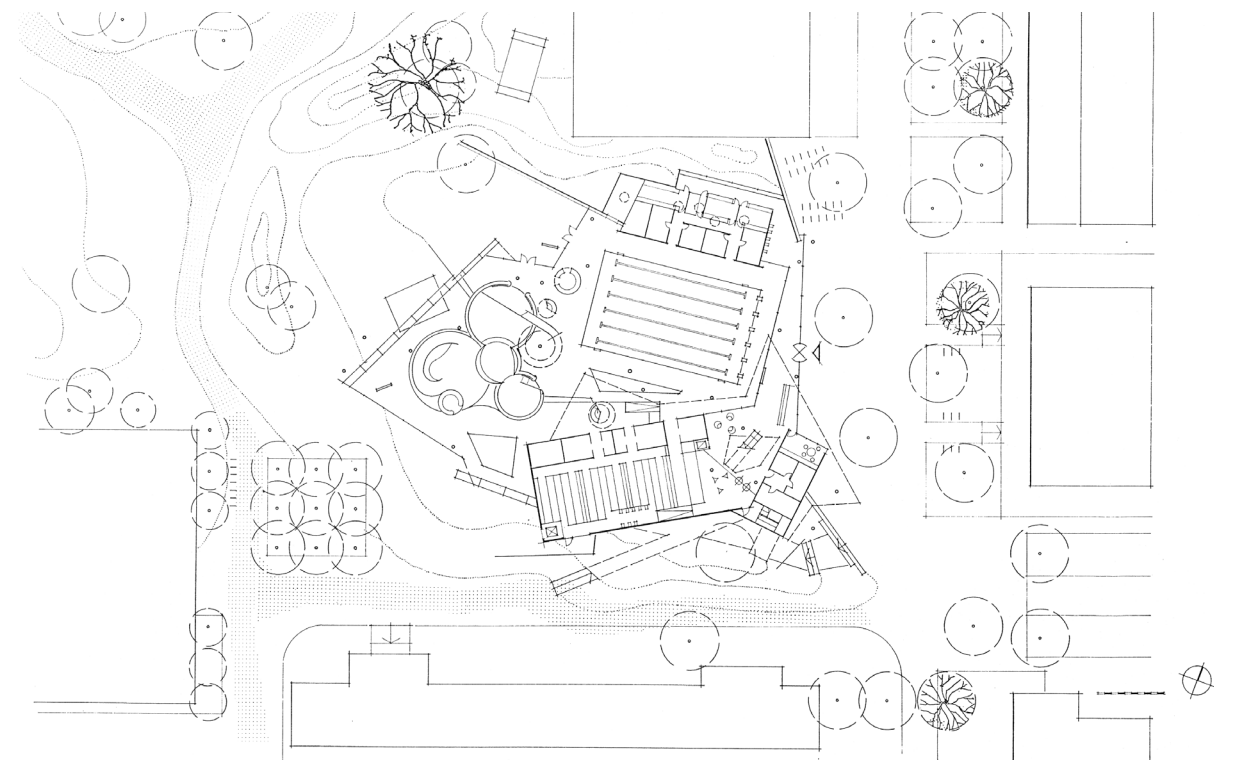
In the early 1980s, a satellite city arose at the edge of Leipzig. Leipzig-Grünau provided residential and living space for approx. 80,000 people. The area was executed with consistency, orthogonal grid patterns, serial production of living spaces, and a high degree of industrially manufactured elements determined the design.

After German reunification, a public district swimming hall was planned for the center of the complex, the first large-scale investment since the construction of a new shopping center. We believed that the planned facility should disengage itself from the severe order of its surroundings.

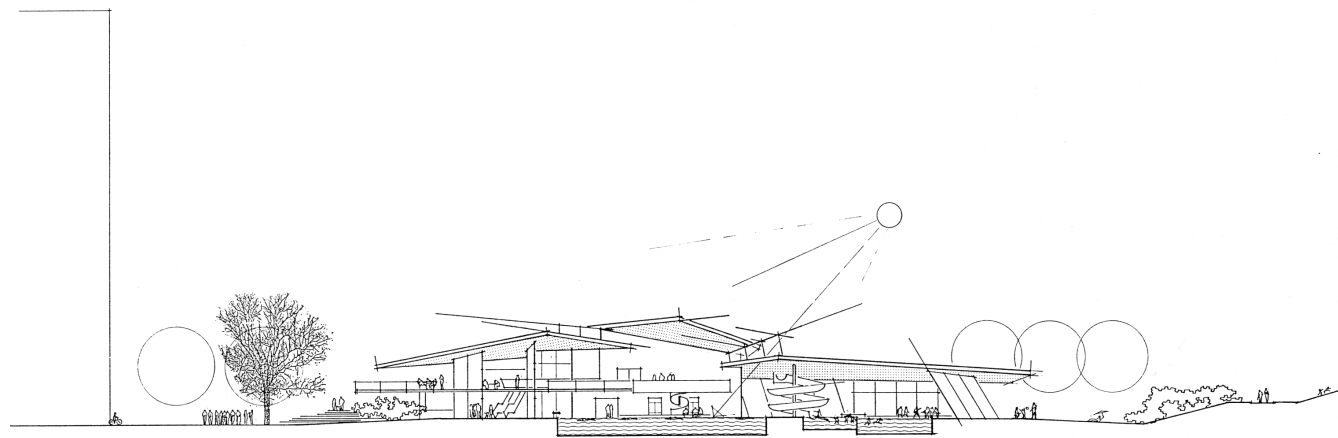
The swimming hall, the entrance and the restaurant, lie along the main pedestrian route, and hence constitutes an urban locale.

From this point, there are views through the building into the park beyond. The structure's free form is highly suggestive, and provides an urban-planning accent. The goal was to set the swimming pools freely within the park landscape, sheltered only from the elements, to offer an impression of openness and transparency.

With regard to material aspects, the relatively open layout was executed frugally. Exposed concrete washed in warm colors determines the look and lends the facility a special mood. Both swimming areas, which can be functionally separated, are distinguished from one another in formal terms. The competition pool assumes an orthogonal form. The leisure pools are instead free and playful in form. They are oriented toward the park and the potential sunbathing lawns.



Level 1



Section





BEHNISCH ARCHITEKTEN



BEHNISCH ARCHITEKTEN