



TECHNOLOGY BUILDING, ILMENAU UNIVERSITY OF TECHNOLOGY

ILMENAU, GERMANY, 1997-2002

Client

Thüringer Finanzministerium,
represented by Staatsbauamt
Erfurt

Architect

Behnisch, Behnisch & Partner

Competition

1997

Planning and construction

1998-2002

Gross

6.000 m² / 64.560 sq.ft.

Volume

19.877 m³ / 701.857 cu.ft.

Address

Gustav-Kirchhoff-Straße 7
98693 Ilmenau
Germany

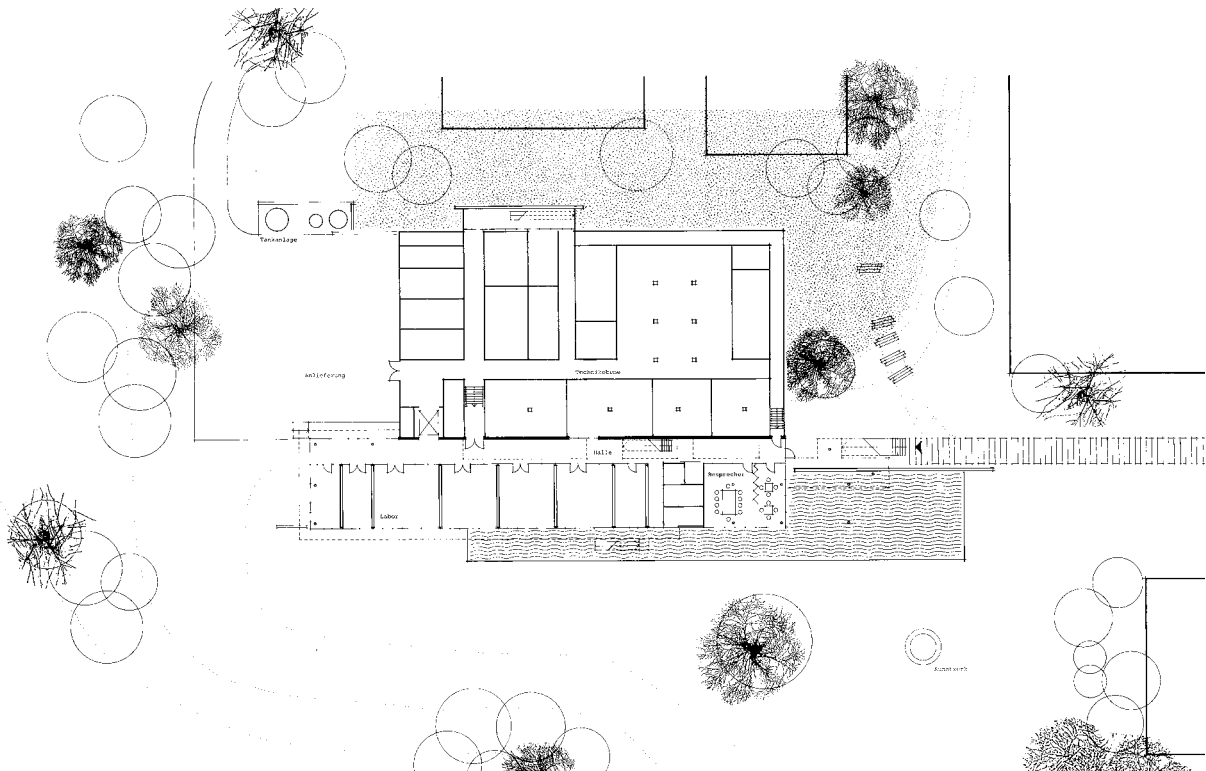
The technology building on the campus of Ilmenau University is intended for basic and applied research in the field of microelectronics.

The site lies at the edge of the campus of Ilmenau Technical University in Thuringia. The gently sloping site enjoys views across a charming protected natural area that includes a lake. To a large degree, this locale determined the alignments of the building, since the offices and lounges are oriented toward this view. Further to the south and east lie additional laboratories, as well as the university's teaching and research buildings.

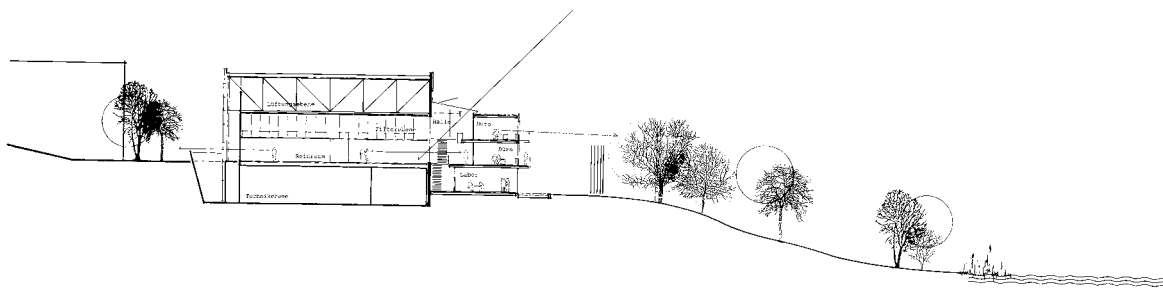
The complex consists of two parts, the clean room and the adjacent office areas, connected via a hallway. In both upper stories are

the office work areas, and beneath additional laboratories. The clean room area, as a complex facility with technical area, work level and ventilation equipment, addresses the slope of the landscape lying behind the office tract.

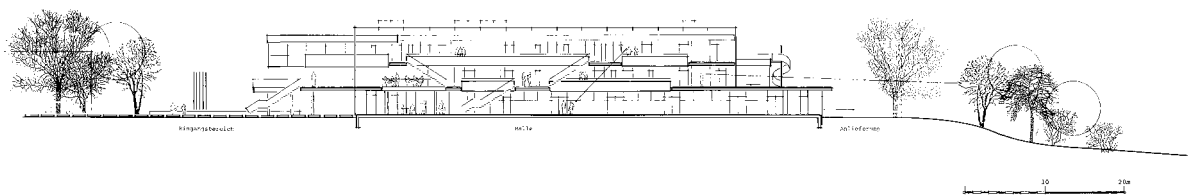
The multi-story glazed hall with its open galleries, connections via stairs, and views into the clean room is the communicative heart of the entire complex. The hall itself, in terms of mood and lighting, is a somewhat sheltered part of the outside world: bright, open, flooded with daylight, in contrast to the introverted, sterile world of the laboratories. The work area is surrounded on three sides by the so-called visitor's corridor, which offers views into the clean room and the laboratories.



Level 1



Short section



Long section

