



HAUS IM HAUS

HAMBURG, GERMANY, 2004-2007

Client

Handelskammer Hamburg

Architect

Behnisch Architekten, Stuttgart

Competition

Behnisch & Partner, 2003, 1st prize

Planning and construction

2004-2007

Gross

1.000 m² / 10,760 sq.ft.

Address

Adolphsplatz 1
20457 Hamburg
Germany

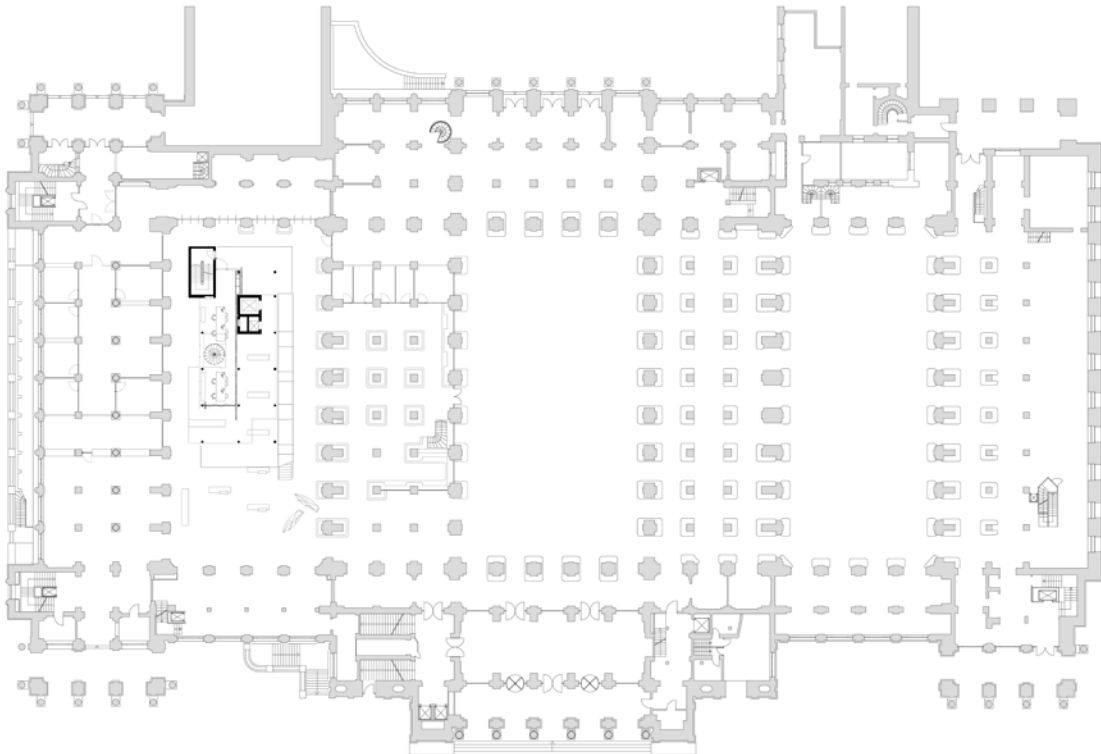
Hamburg's Chamber of Commerce required a more intensive use of their existing neo-classical building on Adolphsplatz.

The brief for the 2003 design competition anticipated the introduction of several additional floor levels within the existing Börsenhalle and a structure which respects the fabric of the historic building. The design proposal adds a total of five new levels which occupy a relatively small proportion of the hall in order to preserve its generous spatial character. A business start-up center, consultation, exhibition, club and meeting room facilities for members, guests and visitors are arranged in a sculptural manner. The uppermost level affords access to generous roof terraces and beautiful views out over the roofs of Hamburg through a band of arched clerestory windows. The new structure

is composed of layers and planes, where lightness, immateriality and

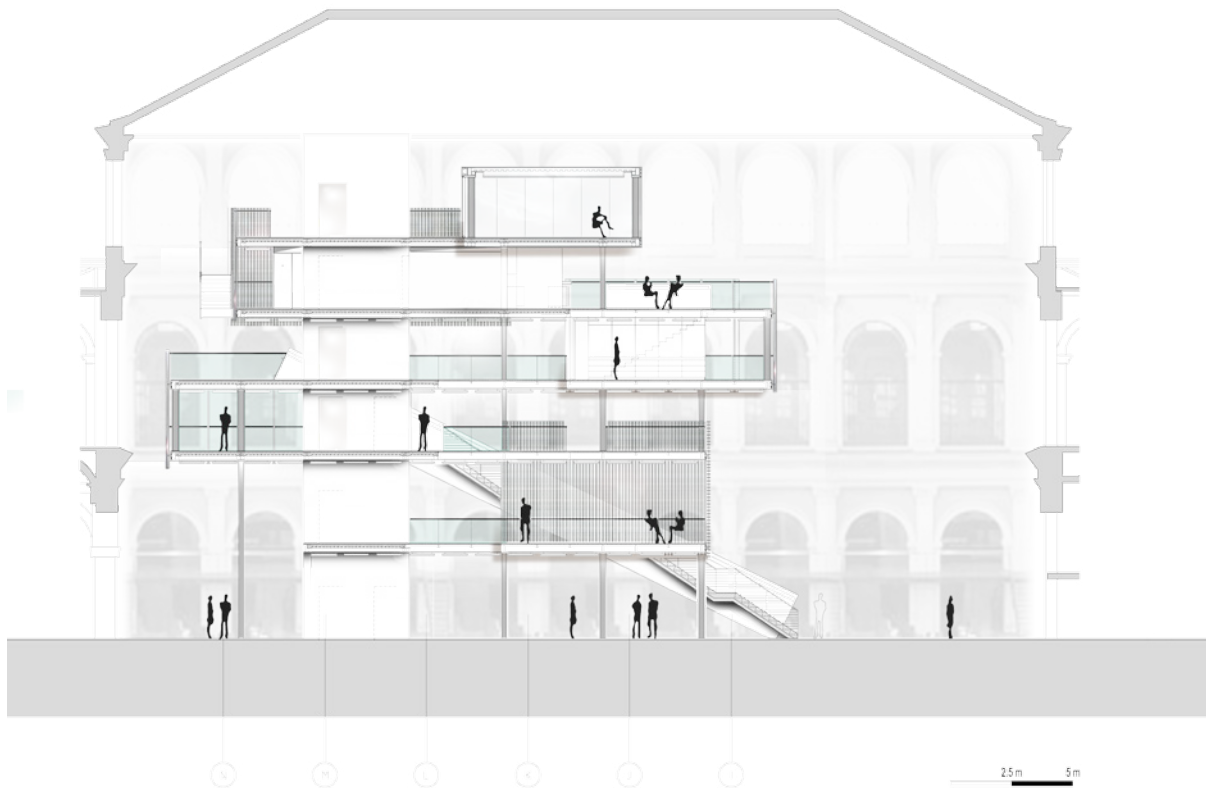
reflection contrast the solid, elaborate walls of the existing building. A variety of fascinating spatial solutions emerge within both the new structure and in relation to the existing building.

The light, free-floating character of the new extension is complemented and accentuated by an LED lighting system that was jointly developed by the architects and Nimbus Design. Although not part of the original architectural competition entry, the lighting system was later seen to offer extraordinary potential for special lighting effects. The "House in a House" is the first structure in the world that is completely lit by LED lamps.



Site plan

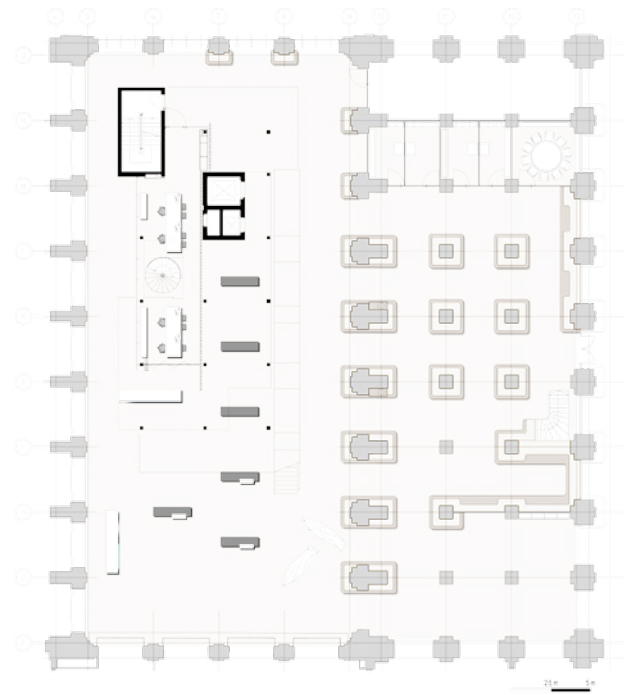
5m 10m



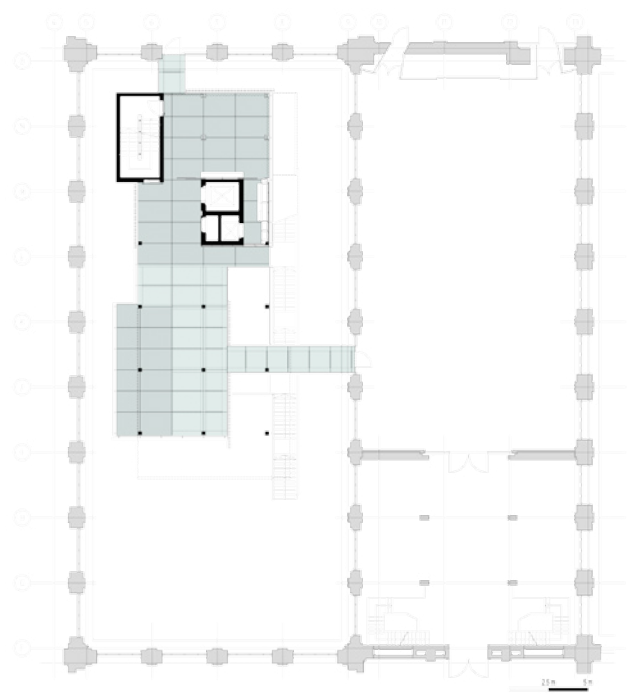
Section







Level 1



Level 2