



THERMAL SPA BAD AIBLING

BAD AIBLING, GERMANY, 2003-2007

Client

Stadtwerke Bad Aibling

Architect

Behnisch Architekten, Stuttgart

Competition

2003, 1st prize

Planning and construction

2003-2007

Gross

10.835 m² / 116,630 sq.ft

Volume

46.116 m³ / 1,628,580 cu.ft.

Address

Lindenstraße 32
83043 Bad Aibling
Germany

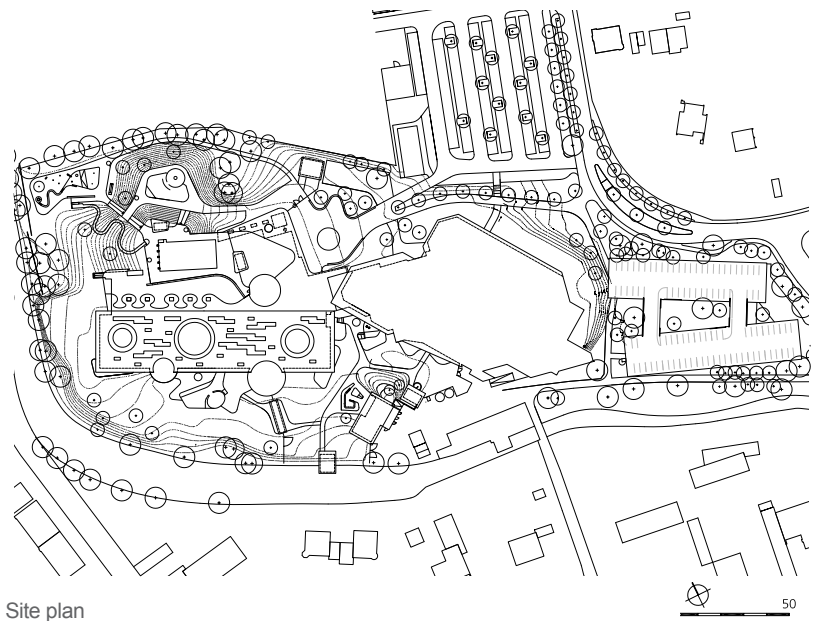
Bad Aibling, a small resort some 60 km south-east of Munich, and the oldest 'moor' spa in Bavaria, wanted to complement its existing health and leisure amenities with new thermal spa baths, associated extensive wellness areas and outdoor swimming pools. The new facilities provide an attractive, health-orientated focus for both the local community and the region, drawing upon the traditions of the town.

The layout of the complex respects the beautiful surrounding landscape, with the building opening out onto the riverfronted sunbathing meadow. The south-west aspect ensures that the building and outdoor areas of the pool deck are flooded with sunlight. From here visitors have commanding views out towards the Bavarian Alps. In responding to the complex demands of water quality, indoor environment and

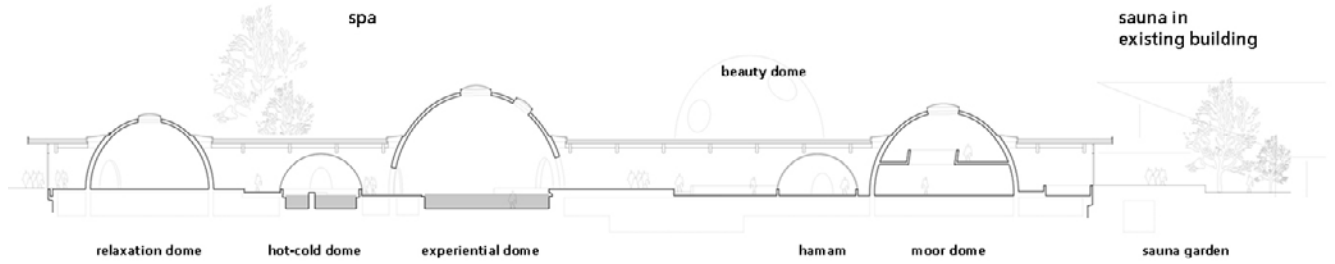
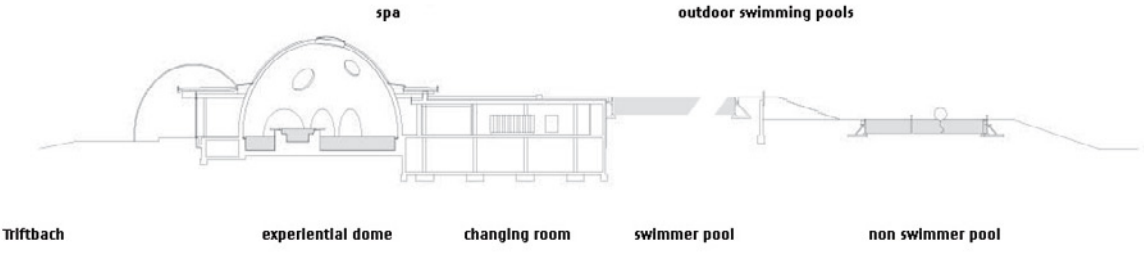
privacy the various indoor pools and treatment areas are accommodated in separate 'cabinet-like' units. These are united by an undulating pool deck which extends from the changing areas through a generous wintergarden out toward the outdoor terraces. The wintergarden affords visitors various bathing possibilities in a quiet and relaxed environment and provides access to both the cabinets, the outdoor pools and the sauna areas. The deck is sheltered by a low-lying timber roof. The cabinets themselves are expressed as a series of differently sized domes. Largely opaque, the domes are perforated by various circular openings. Each dome has a distinctly individual character promoted by the incidence of natural light and complimentary artificial lighting, the use of different materials and colours, different water features and acoustic qualities.



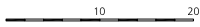
The interior and exterior areas of the spa merge with one another and the glass facade of the hall is scarcely perceptible because it is connected on both sides to wooden platforms, flower beds and terraces with sun loungers. The conditions presented by the different functional areas result in a clear, logical structuring of the site. The sauna area has been extended towards the south and integrated into the existing structures.



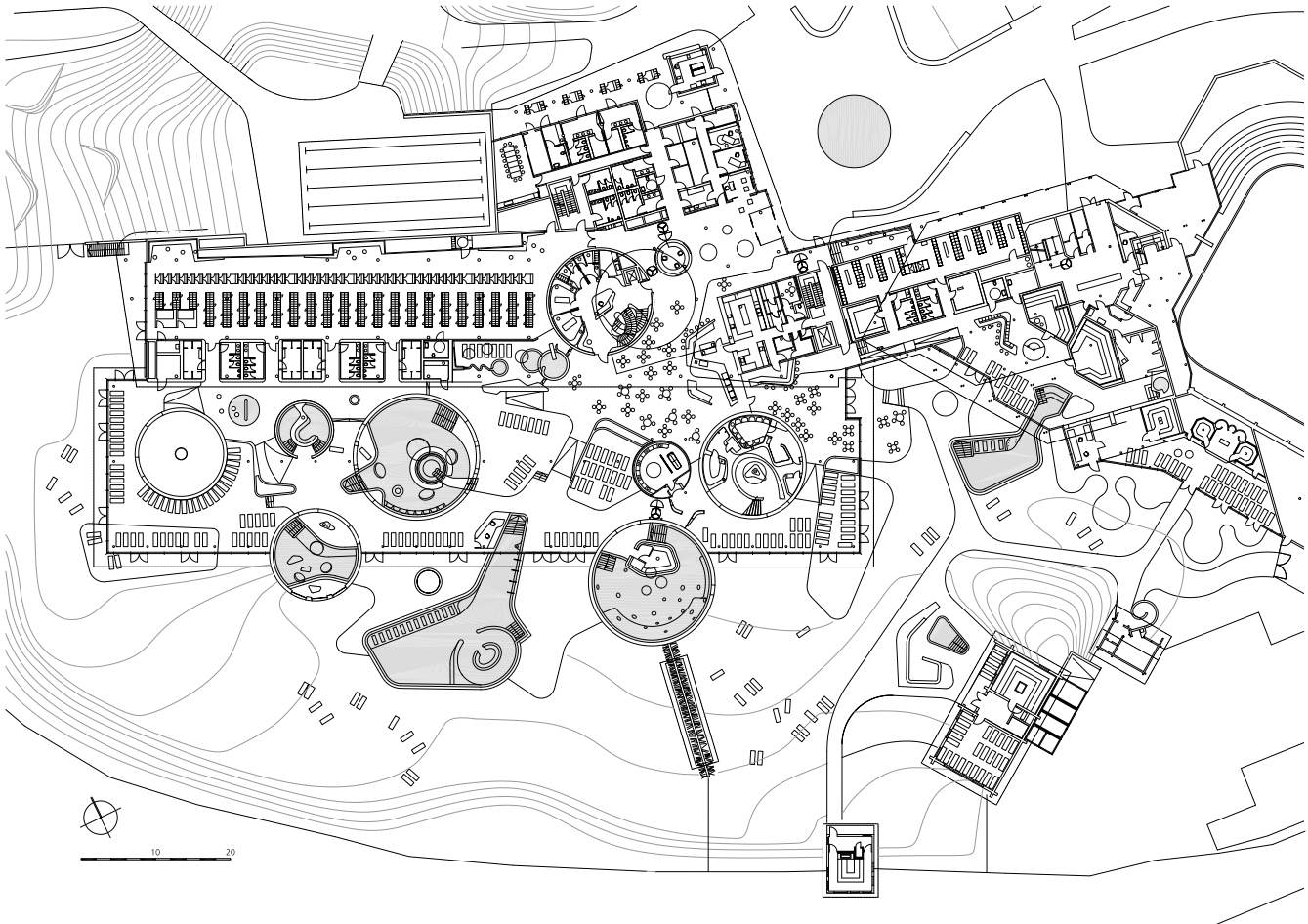
Site plan



Sections







Level 1

