



REFURBISHMENT DISTRICT ADMINISTRATION SCHWÄBISCH GMÜND

SCHWÄBISCH GMÜND, GERMANY, 2013-2014

Client

Landratsamt Ostalbkreis

Architect

Behnisch Architekten, Stuttgart

Planning and construction

2013-2014

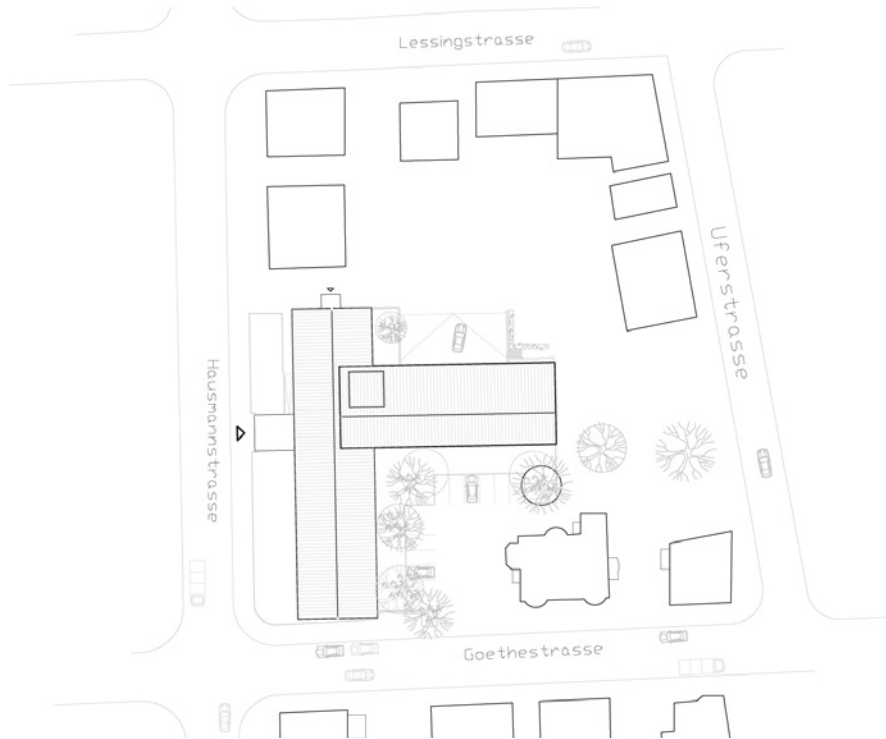
Address

Landratsamt Ostalbkreis
Dienststelle Schwäbisch Gmünd
Haussmannstraße 29
73525 Schwäbisch Gmünd
Germany

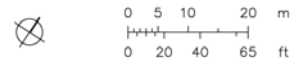
The district office in the Haussmannstrasse in Schwäbisch Gmünd has been opened in 1956. It is a very functional and at the same time representative administration building from Behnisch & Partner. In 2014 an energetic amendment to the standards of the EnEV 2009 had to be implemented. Additionally, the façade of the upper part of the building had to be revised in order to grant the administrative building a contemporary appearance. Thus, in the process of refurbishment, the district office received a new, timeless design. All existing wood frame windows in the white-plastered upper part of the building were in a condition that is no longer compatible with current energy standards. Due to this circumstance, they were thoroughly replaced by windows with aluminum frame profiles and triple insulating glazing. Furthermore, the insulation and the plastered

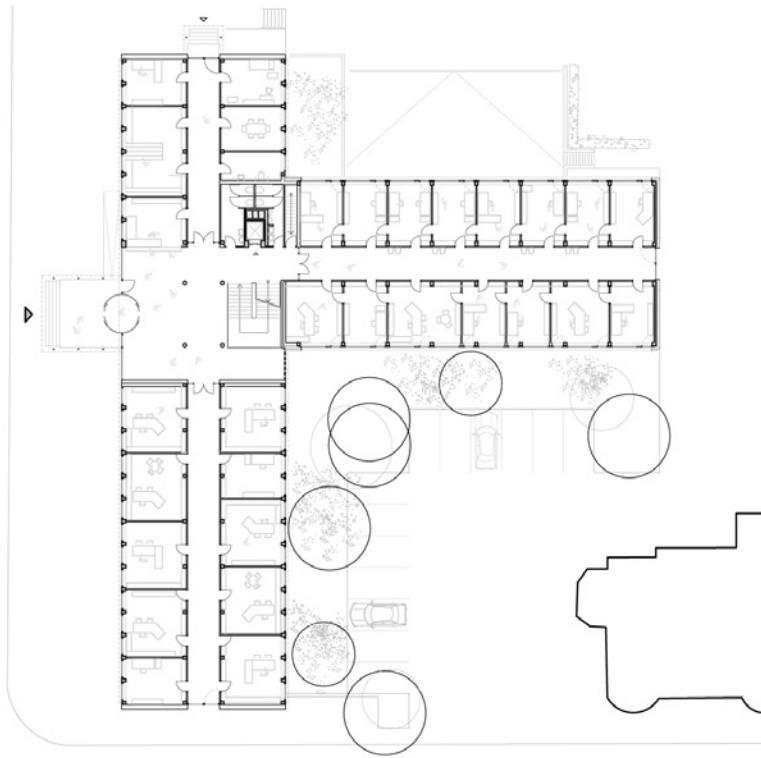
façade was completely renewed. A heat insulation composite system upgraded the façade in terms of energy-efficiency. The sun shading on the south side was provided with light-diverting louvers – for an optimal daylight usage. Furthermore the integration of the sun shading into the heat insulation composite system enables a calm façade elevation.

An additional step was the energetic refurbishment of the two roof areas through a complete reconstruction of the rooftop. The existing metal coating was disassembled into the pumice concrete supporting shell and then rebuilt. These refurbishment measures and the redesign of the façade modernize the district office, thus ensuring an adequate representative center of the Ostalbkreis.

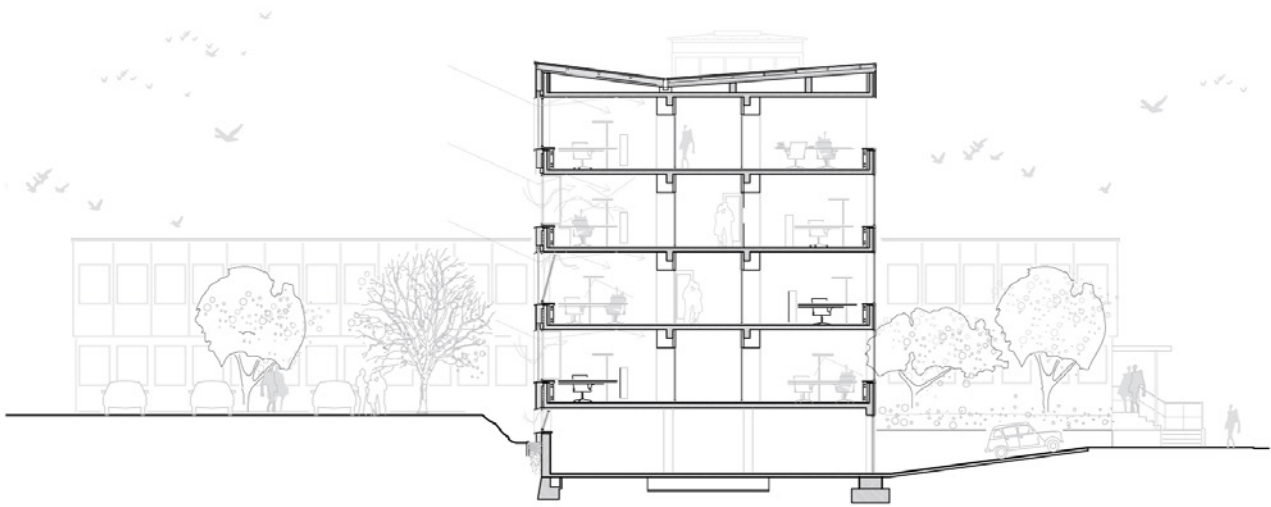
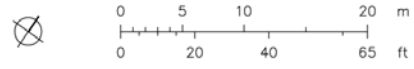


Site plan





Level 1



Section

