

# YIHE BUISNESS PARK MASTERPLAN

BEIJING, CHINA, 2014 - 2015

## Client

Sinobo Group Co., Ltd

## Architect

Behisch Architekten, Stuttgart

## Completion

2014 - 2015 (not realized)

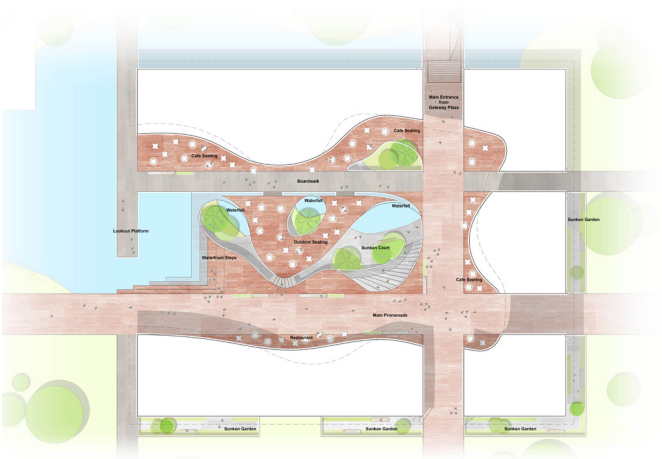
## Gross

300,000 m<sup>2</sup> / 3,230,000 sq.ft.

The site, located in the northwest corner of Beijing, is situated in the center of the Haidan district, adjacent to the historic Summer Palace and scenic Kunming Lake. Nearby are important centers of technology and higher education, including Peking and Tsinghua Universities. The site is famous for its beautiful mountain scenery, natural environment and direct views to the royal Summer Palace gardens, which is listed as a world cultural heritage site. Its history can be traced back several centuries to the Qing Dynasty. The master plan proposal for the area includes the development of a highly sustainable, low-density mix of

business and living quarters developed to the highest standards. The project will be noted for its unique concept which attempts to bridge history, nature and technology into a successful mixed-use development of international stature. The design concept, while modern and contemporary in approach, draws upon vernacular Chinese traditions, including the arrangement buildings around interior courtyards and the use local materials and craftsman techniques. The site will house a mix of high-end residential villas, hotel, office park and several public amenities intended to serve the surrounding neighborhoods and the city of Beijing.





Transport Hub



Courtyard





