



# LYCÉE FRANCO-ALLEMAND

BUC, FRANCE, 2022

## Client

Conseil départemental des  
Yvelines

## Architect

Behnisch Architekten, Stuttgart  
with Atelier 2a+, Versailles,  
France

## Competition

2015, 1st Prize

## Planning and construction

2016-2022

## Gross

16.044 m<sup>2</sup> / 172.696 ft<sup>2</sup>

## Volume

61.138 m<sup>3</sup> / 2.159.088 ft<sup>3</sup>

## Address

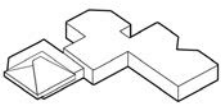
Lycée Franco-Allemand  
7 rue Collin Mamet  
78530 Buc  
France

In Buc, a town bordering Versailles, a new school campus has been built in the heart of a tree-shaded park. The goal was to modernise the site of an existing school dating from the 1980s, including a Franco-German bilingual secondary school, a primary school, a lower secondary school and gymnasium, and to link them together with outdoor enhancements. This approach has resulted in the creation of an attractive place of learning for approximately 1,000 students, standing in a park amidst magnificent trees.

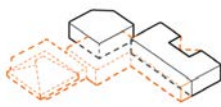
The look of the campus depends largely on the parasol structures, which from the park appear confidently in view, symbolically extending their protective roof over the school group. The new parts of the building are adjacent to the existing building in the direction of the park and the school courtyard. The curved wings frame the school courtyard, from the

middle of which the welcoming and protective parasols structures unfold. This place is designed to host the many different activities and festivities organised by the school.

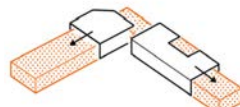
The aim of taking advantage of natural light was a priority during the design phase of the campus. The result is premises benefitting from natural light, even in deeper internal areas. The parasols also play a key role here. The transparent covering of the umbrella structures allows light to penetrate. The timber lamellas have two functions: firstly providing shading, secondly acting as a light deflector. This ensures that the building benefits from winter sun whilst being protected from overheating due to direct summer sun penetration.



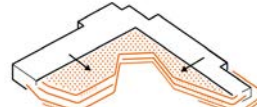
EXISTING



REMOVAL



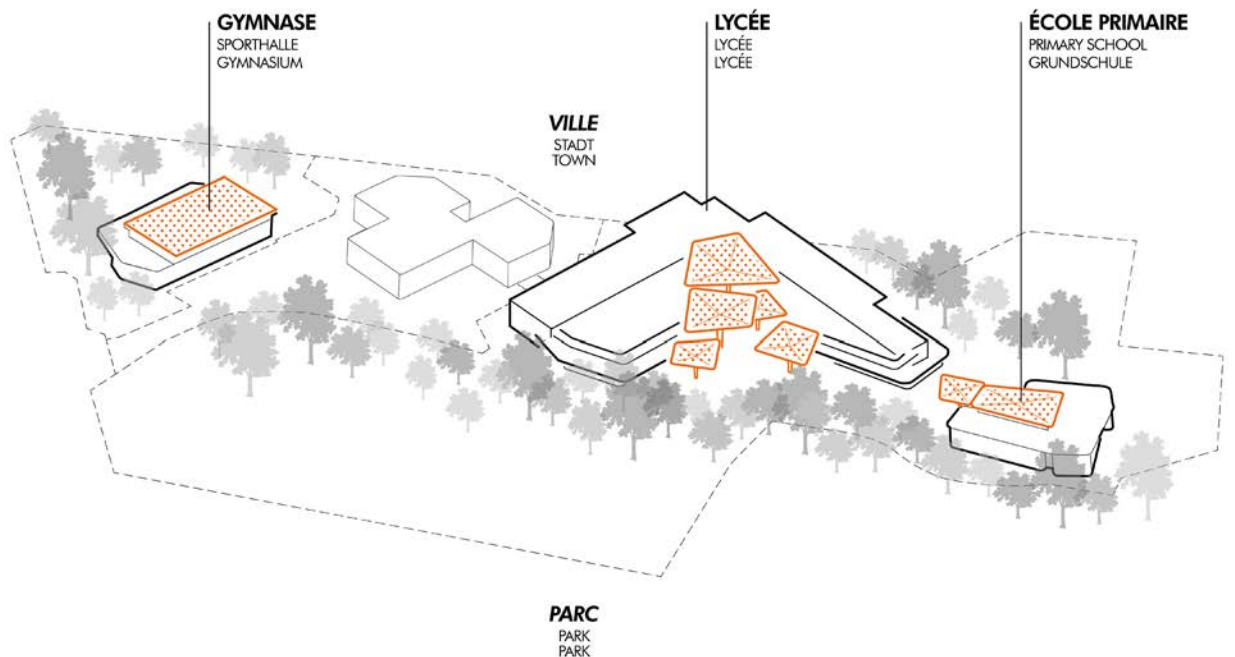
EXTENSION-CLASSROOMS

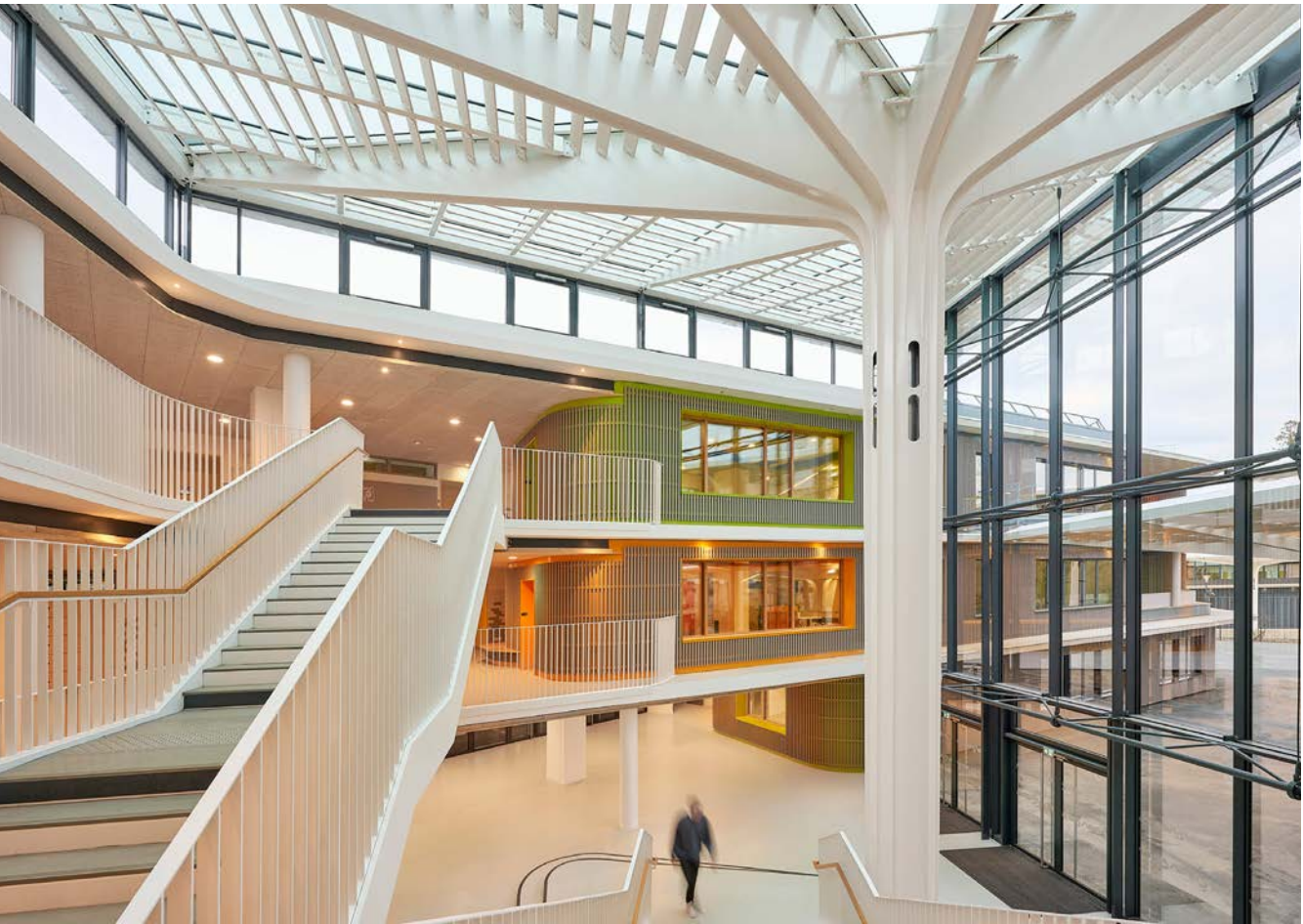


EXTENSION SPECIAL ROOMS



PARASOLS







Floor plan level 1